

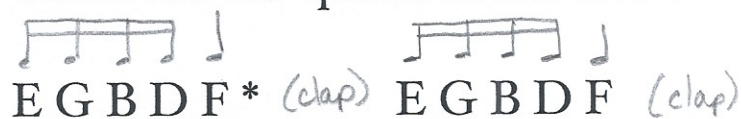
Lines/Spaces Chant

Director Copy (do not give students a copy)

Metronome on 70, students tap feet, sit up tall, use a very confident voice (almost shouting)



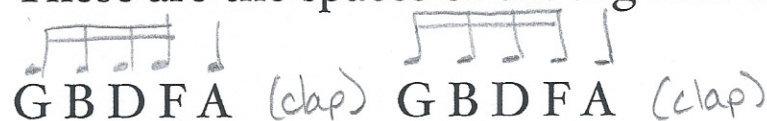
These are the spaces of the treble clef



These are the lines of the treble clef (HUH!)**



These are the spaces of the big bass clef***



These are the lines of the big bass clef (HUH!)

* You can have them change pitch a little on these letters going up to help them remember that the E is on the bottom. Still in a chant voice, but just a little inflection.

**If you do BOTH chants, omit the HUH here and only do it at the end. Also students can make a motion on HUH. Be creative.

*** Say big bass clef with the lowest, deepest booming voice they can.