

# How to Access BOOM Decks Purchased on TpT

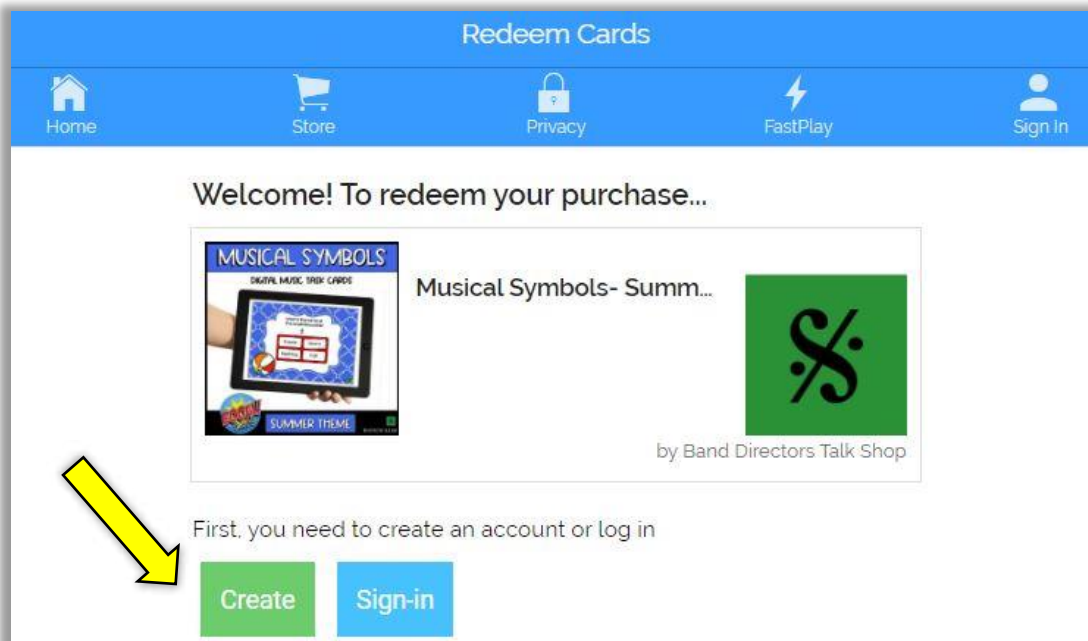
1.) Download your resource from TpT.



2.) Click on the resource picture on the first page. This will take you to your deck on BOOM Learning.



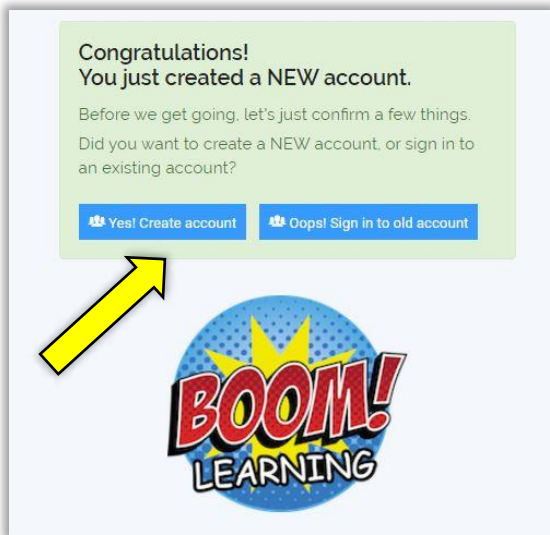
3.) Create a FREE Boom Learning Account. If you already have one, select Sign In.



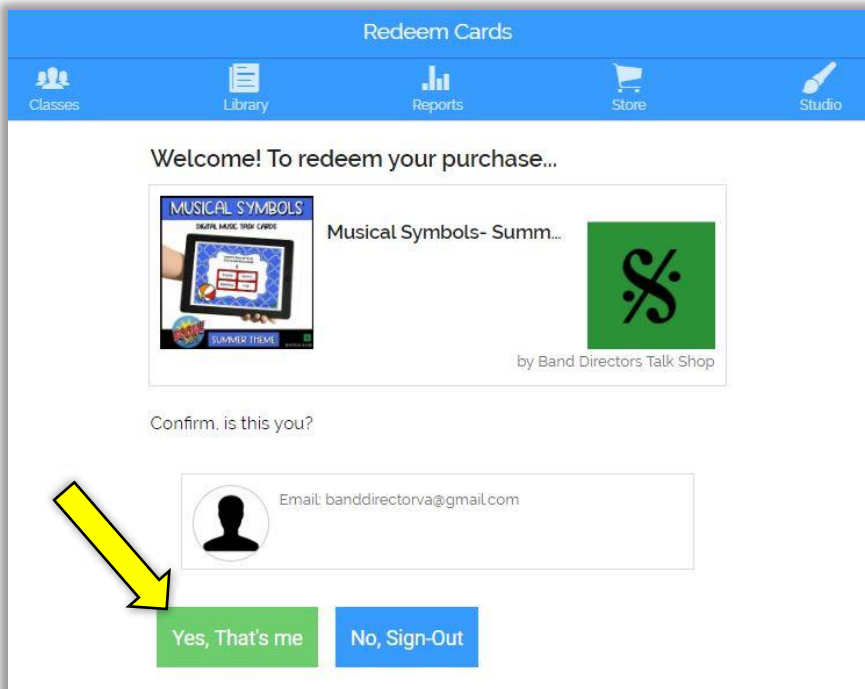
#### 4.) Teacher Sign-Up (your choice on how you want to sign up)



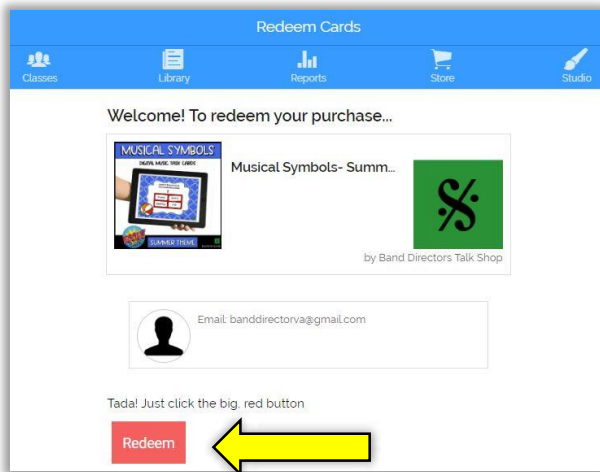
#### 5.) Click on "Yes, create account"



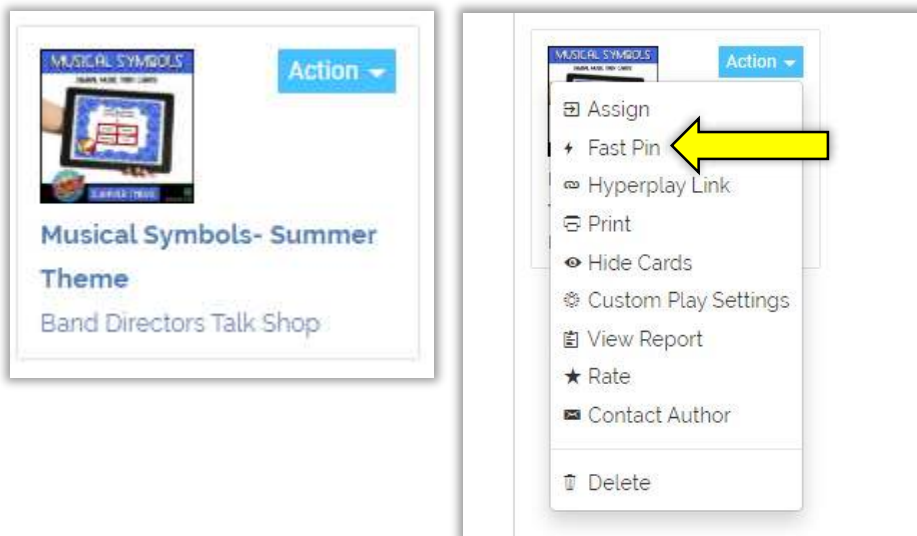
#### 6.) To redeem your TpT purchase, click "Yes, that's me!"



7.) Accept the terms and click the red "Redeem" button



8.) Locate your Deck and click on the Action button. There, you will find FastPin!



9.) Copy your FasPin link and paste into your google classroom. The link will be active for 14 days. If you choose to reassign the same deck, simply create a new FastPin. Remember- each FastPin you create will be active for 14 days but you can create new FastPins over and over.



Fastplay is a shortcut to get students playing right away.  
No need to create accounts or log in. However, with Fastplay, there is  
no logging or student reporting.

pnrv

Your current pin expires: in 14 days

Students play at:  
<https://boom.cards/fastplay/pnrv>