

# Creating Your Ultimate Concert Cycle Roadmap

---

WTAMU Band Camp Directors Workshop  
July 11, 2024 at 2:30 pm  
Bill Harden, Customer Education Specialist



Marching Band  
Solo and Ensemble  
Lessons  
All-State Requests  
Parent Tryouts  
Budgeting  
Show Planning  
Holiday Concerts  
Concert Plans  
Concert and Sight-Reading  
Booster Club  
Faculty Meetings  
Trips  
Grants  
Spring Concerts



# VISION

LATER

NEXT

NOW

# Setting the Calendar



# What's My Roadmap?

- When is my next performance?
- How many weeks do I have to prepare?
- What are my goals for that performance?
  - What music are we performing?
  - Is it a concert or a festival/evaluation?
  - Is sight-reading involved?
- How do I reach these goals?



# Determine a Weekly Goal



What should I be working on in week one?

Week four?

Week ten?

Week of performance?

# Daily Plan to Reach Weekly Goal

Determine how much time to spend on:

- Warm-Ups/Daily Drill
- Sight-Reading Skills
- Music for the performance

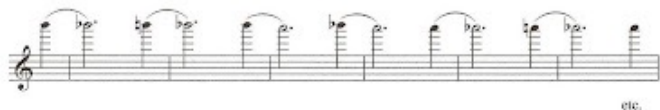


# Daily Drill

"Baker" Flute Warm-up



Moyse Sonority Etude #1



[This Photo](#) by Unknown Author is licensed under [CC BY-ND](#)

- Long tones
- Lip slurs
- Technique builders
- Scales
- Rhythm exercises
- Music specific exercises
- Published warm-ups

# Getting to the Music

*Planning is  
EVERYTHING!*



# The Plan

- Know what you want to cover each day.
- Keep the rehearsal pacing moving.
- Variety in routine is key.
- Set a timer.

# Sight-Reading

- Good sight-reading skills make all music easier.
- Start early and include often in rehearsal.
- Gradually move from easier to harder literature.
- Lots of online and published tools are available.
- Purchase past sight-reading tunes from festivals/UII.

# Ask For Help!

- Find a mentor.
- Many great teachers in this country.
- It is never too early or late in the cycle.

# Questions/Comments?

---

bill@cuttime.net

